



Madison, Wisconsin

INDEX OF SHEETS

SHEET NO.	EC1-EC4	EROSION CONTROL
SHEET NO.	U1-U10	UTILITY PLAN & PROFILES
SHEET NO.	U11-U12	STORM SEWER SCHEDULE

CITY OF MADISON

CITY ENGINEERING DIVISION

DEPARTMENT OF PUBLIC WORKS

PLAN OF PROPOSED IMPROVEMENT

2024 RESURFACING

CITY PROJECT NO. 14896
 CONTRACT NO. 8736

PROJECT
 LOCATION

CONVENTIONAL SIGNS	
FIELD VERIFY ALL UTILITY LOCATIONS	
GAS	— G —
STORM SEWER	— ST —
SANITARY SEWER	— SN —
WATER	— W —
BURIED ELECTRIC	— E —
OVERHEAD ELECTRIC	— OH —
POWER POLE	□

NOTES:
 ALL GUTTERS SHALL DRAIN WITH A MINIMUM GRADE
 OF 0.50% TOWARD STORM SEWER INLETS.



PUBLIC IMPROVEMENT PROJECT APPROVED

APPROVED DATE

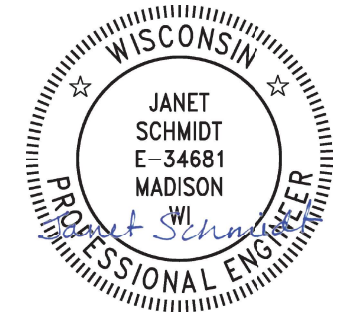
BY THE COMMON COUNCIL OF MADISON, WISCONSIN

PUBLIC IMPROVEMENT DESIGN APPROVED BY:

Janet Feb 21, 2024

City Engineer Date

STORM SEWER DESIGNED BY:



Feb 21, 2024

PLOT SCALE: 1" = 1'

PLOT NAME: ---

REV. DATE: 2/17/2024 4:35 PM

ORIGINATOR: CITY_OF_MADISON

060801301031
2834 McKenna Blvd
VANN, JAMES & KAREN

060801303029
6922 Stratford Dr
HENRY, RYAN M

060801303011
6918 Stratford Dr
BETHEL, GARY
LINDA BETHEL

060801303318
6914 Stratford Dr
DOUCETTE, ROSE M

060801303300
6910 Stratford Dr
BEYLER, ERIC & PATRICIA

060801303293
2814 Shefford Dr
THOMAS, LYNNE CYRKIEL

060801301049
2838 McKenna Blvd
MAURER, JOSEPH W

060801302013
6921 Stratford Dr
GENTHE, TIA M
ROBERT C GUST

060801302021
6917 Stratford Dr
DIEHM, KRISTOPHER A &
MARYANN DIEHM

060801302039
6913 Stratford Dr
HELLENBRAND, PATRICIA H

060801302047
6909 Stratford Dr
PARISI, MICHAEL & DIANE

060801302055
6905 Stratford Dr
SPOERLE, DENNIS & BELINDA

060801302063
6901 Stratford Dr
WILLIAMS, EVAN M
SEANNA B RANDEL

EROSION CONTROL NOTES:
EROSION CONTROL MEASURES SHALL BE IN PLACE PRIOR TO ANY OTHER CONSTRUCTION ACTIVITY.
THE CONTRACTOR IS RESPONSIBLE FOR THE CONSTRUCTION AND MAINTENANCE OF ALL EROSION CONTROL MEASURES UNTIL FINAL ACCEPTANCE BY THE CITY OF MADISON.
THE CONTRACTOR SHALL INSTALL AND MAINTAIN EROSION CONTROL MEASURES IN ACCORDANCE WITH THE WDNR SOC STANDARDS AND CITY OF MADISON STANDARD SPECIFICATIONS.
THE CONTRACTOR SHALL PROVIDE STREET CLEANING AS NEEDED ON A DAILY BASIS TO KEEP TRACKING TO A MINIMUM.
INLET PROTECTION SHALL BE INSTALLED WITHIN THE CONSTRUCTION LIMITS. ADDITIONAL INLET PROTECTION SHALL BE INSTALLED AS DIRECTED.
POLYMER SHALL BE APPLIED TO DISTURBED AREAS AS DIRECTED BY THE CONSTRUCTION ENGINEER.

	3' CLEAR STONE ENTRANCE BERM - INSTALL TYPE HR FILTER FABRIC, 3" CLEAR STONE, MIN 1" DEPTH
	RIGID FRAME INLET PROTECTION
	CLEAR STONE VELOCITY CHECK
	SILT SOCK (PLACE AS NEEDED & AROUND STOCKPILES)

MATCH LINE 107+75.00

MATCH LINE 112+75.00

MARK	REVISION	DATE	BY
###	###	###	###
###	###	###	###
###	###	###	###
###	###	###	###

Designed By: DAO
Date: 2/19/2024 2:54 PM
Scale: 1" = 40'
14896

14896
MADISON, WI
CONTRACT NO: 8736

EROSION CONTROL - STRATFORD DR
2024 RESURFACING
M:\DESIGN\Projects\14896\CAD\Drawings\14896SWR-PipeNetwork.dwg

CITY OF MADISON WISCONSIN

14896
EC-1

EROSION CONTROL NOTES:

EROSION CONTROL MEASURES SHALL BE IN PLACE PRIOR TO ANY OTHER CONSTRUCTION ACTIVITY.

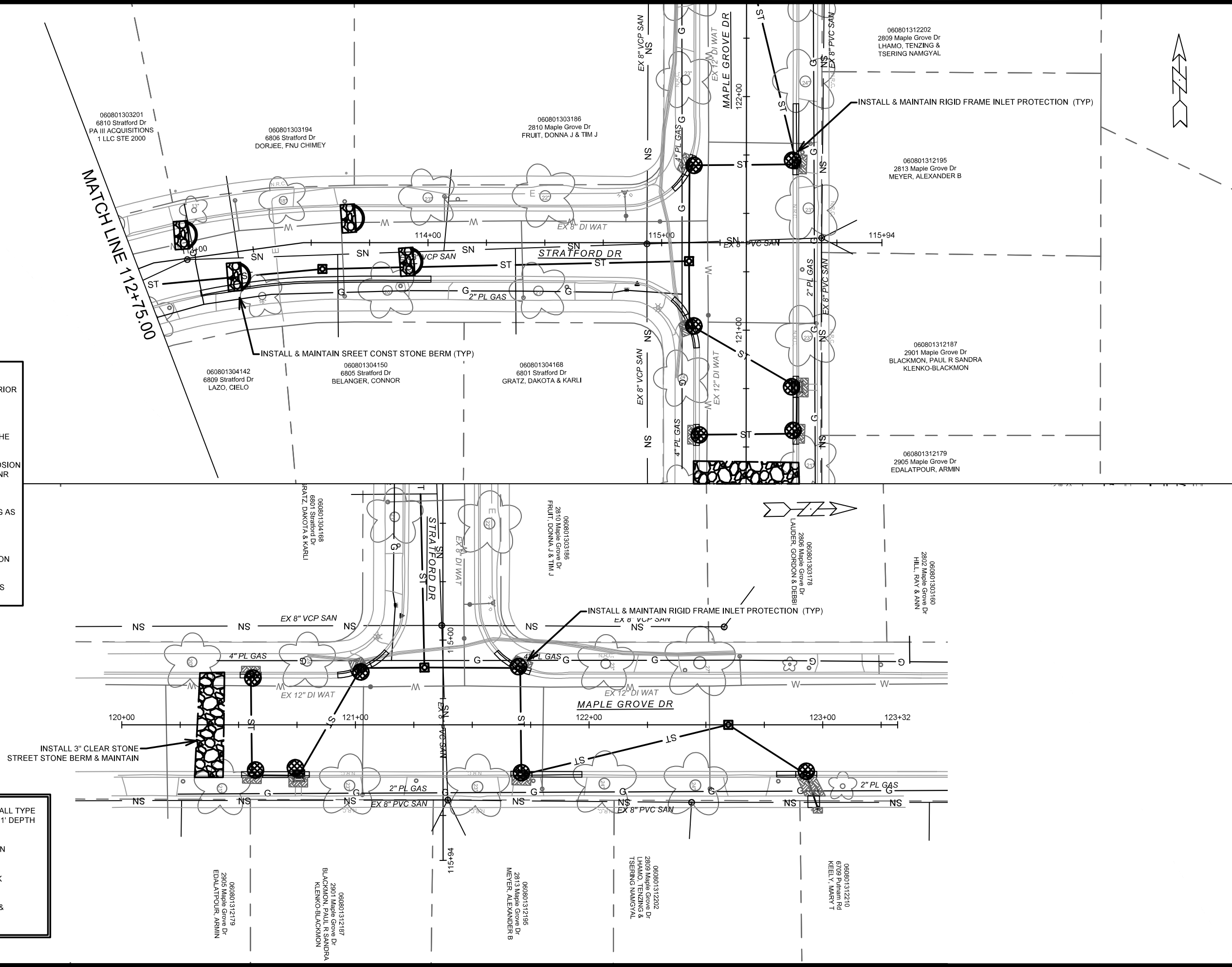
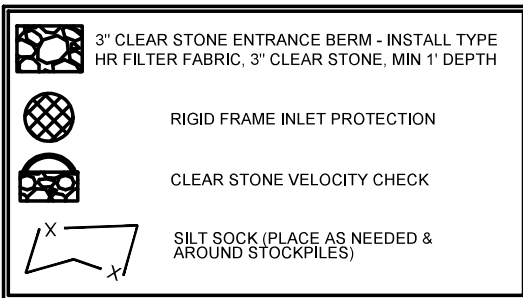
THE CONTRACTOR IS RESPONSIBLE FOR THE CONSTRUCTION AND MAINTENANCE OF ALL EROSION CONTROL MEASURES UNTIL FINAL ACCEPTANCE BY THE CITY OF MADISON.

THE CONTRACTOR SHALL INSTALL AND MAINTAIN EROSION CONTROL MEASURES IN ACCORDANCE WITH THE WDNR SOC STANDARDS AND CITY OF MADISON STANDARD SPECIFICATIONS.

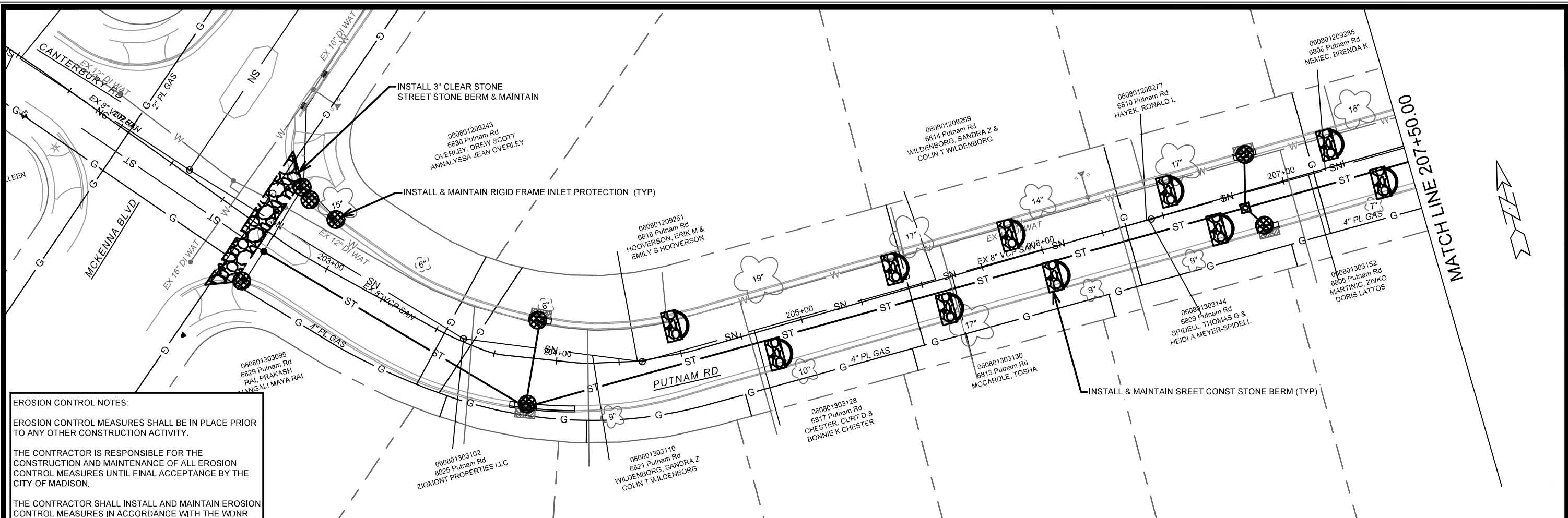
THE CONTRACTOR SHALL PROVIDE STREET CLEANING AS NEEDED ON A DAILY BASIS TO KEEP TRACKING TO A MINIMUM.

INLET PROTECTION SHALL BE INSTALLED WITHIN THE CONSTRUCTION LIMITS. ADDITIONAL INLET PROTECTION SHALL BE INSTALLED AS DIRECTED.

POLYMER SHALL BE APPLIED TO DISTURBED AREAS AS DIRECTED BY THE CONSTRUCTION ENGINEER.



EROSION CONTROL - STRATFORD DR & MAPLE GROVE DR		14896	EC-2																				
2024 RESURFACING		MADISON, WI																					
M:\DESIGN\Projects\14896\CAD\Drawings\14896SWR-PipeNetwork.dwg		CONTRACT NO: 8736																					
		<table border="1"> <tr> <th>MARK</th> <th>REVISION</th> <th>DATE</th> <th>BY</th> </tr> <tr> <td> </td> <td> </td> <td> </td> <td> </td> </tr> <tr> <td> </td> <td> </td> <td> </td> <td> </td> </tr> <tr> <td> </td> <td> </td> <td> </td> <td> </td> </tr> <tr> <td> </td> <td> </td> <td> </td> <td> </td> </tr> </table>	MARK	REVISION	DATE	BY																	Scale: 1" = 40' Date: 2/19/2024 2:54 PM Designed By: DAO 14896
MARK	REVISION	DATE	BY																				
		14896	EC-2																				



EROSION CONTROL NOTES:

EROSION CONTROL MEASURES SHALL BE IN PLACE PRIOR TO ANY OTHER CONSTRUCTION ACTIVITY.

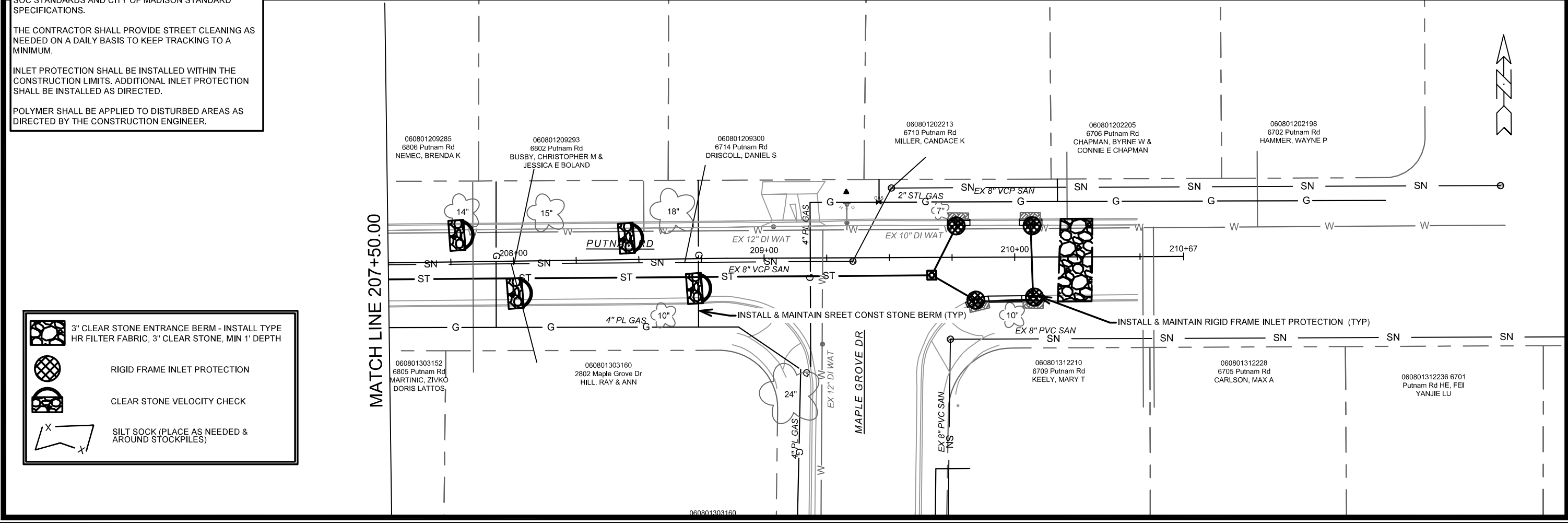
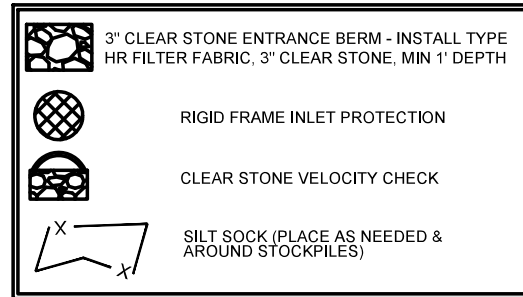
THE CONTRACTOR IS RESPONSIBLE FOR THE CONSTRUCTION AND MAINTENANCE OF ALL EROSION CONTROL MEASURES UNTIL FINAL ACCEPTANCE BY THE CITY OF MADISON.

THE CONTRACTOR SHALL INSTALL AND MAINTAIN EROSION CONTROL MEASURES IN ACCORDANCE WITH THE WDNR SOC STANDARDS AND CITY OF MADISON STANDARD SPECIFICATIONS.

THE CONTRACTOR SHALL PROVIDE STREET CLEANING AS NEEDED ON A DAILY BASIS TO KEEP TRACKING TO A MINIMUM.

INLET PROTECTION SHALL BE INSTALLED WITHIN THE CONSTRUCTION LIMITS. ADDITIONAL INLET PROTECTION SHALL BE INSTALLED AS DIRECTED.

POLYMER SHALL BE APPLIED TO DISTURBED AREAS AS DIRECTED BY THE CONSTRUCTION ENGINEER.



MARK	REVISION	DATE	BY
###	###	###	###
###	###	###	###
###	###	###	###
###	###	###	###

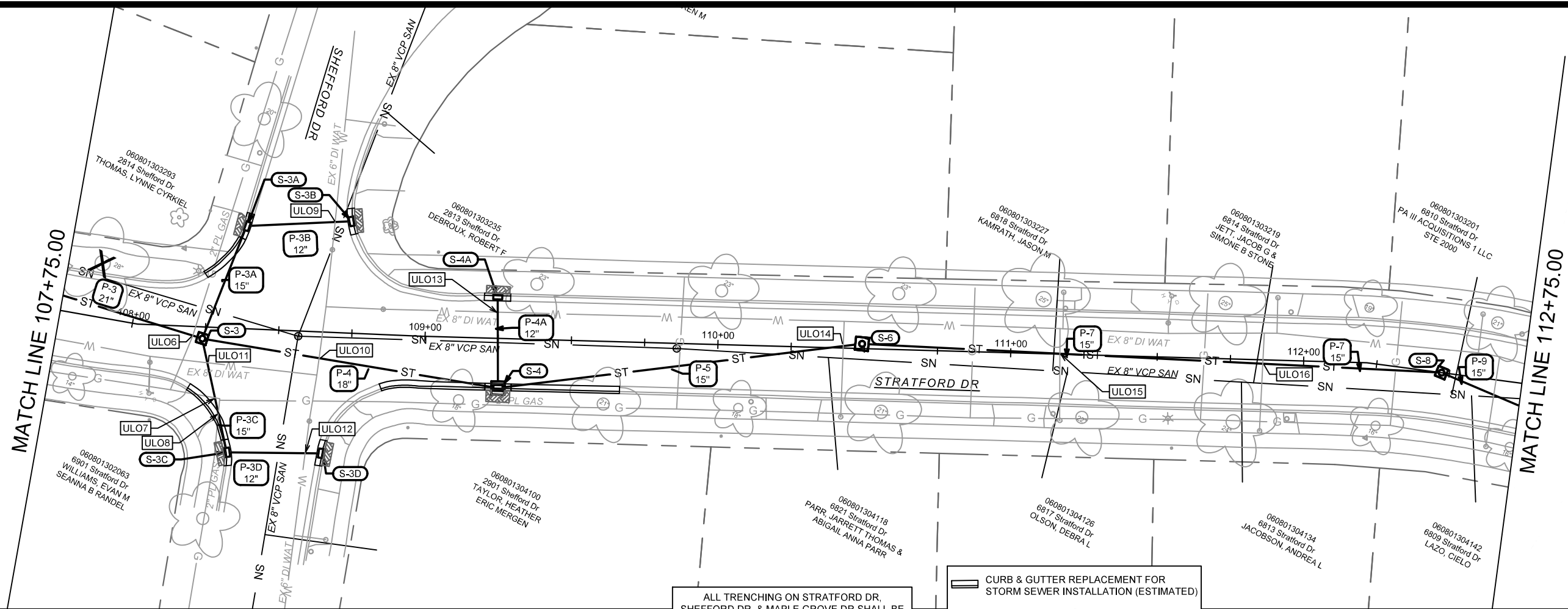
Designed By: DAO
Date: 2/19/2024 2:54 PM
Scale: 1" = 40'

14896
MADISON, WI
CONTRACT NO: 8736

EROSION CONTROL - PUTNAM RD
2024 RESURFACING

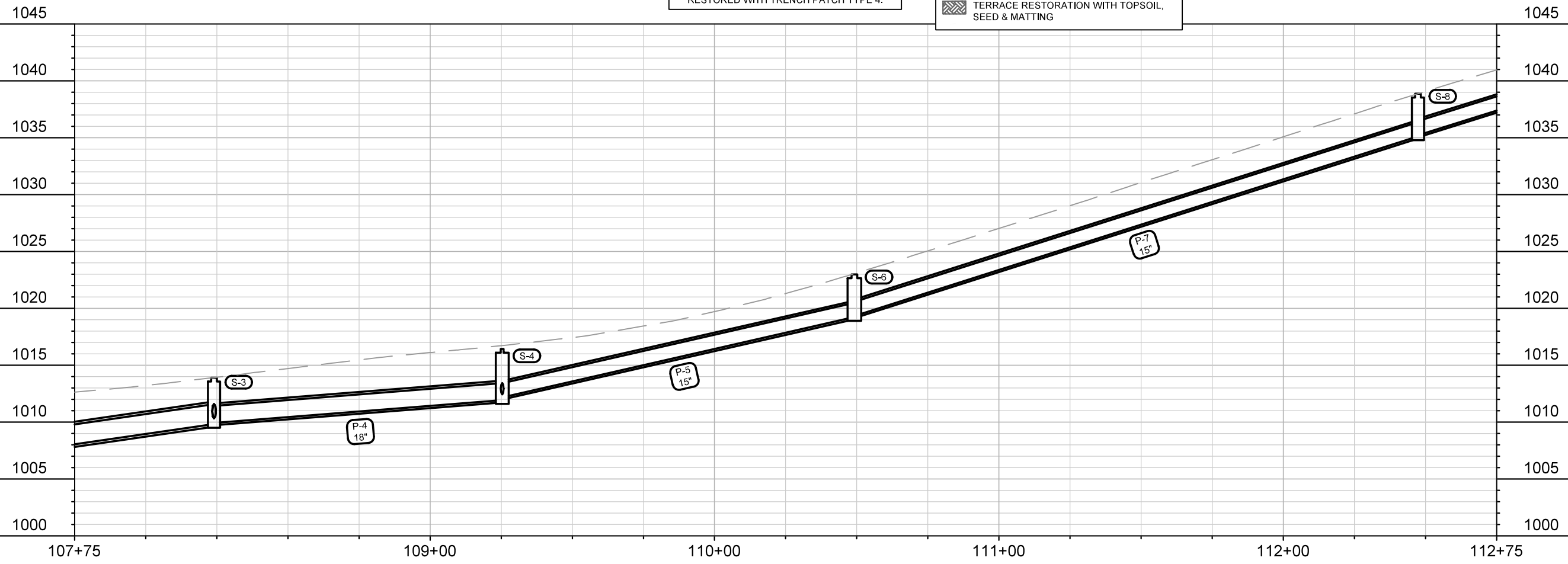
M:\DESIGN\Projects\14896\CAD\Servers\14896SWR-PipeNetwork.dwg

14896
EC-3



ALL TRENCHING ON STRATFORD DR, SHEFFORD DR, & MAPLE GROVE DR SHALL BE RESTORED WITH TRENCH PATCH TYPE 4.

- CURB & GUTTER REPLACEMENT FOR STORM SEWER INSTALLATION (ESTIMATED)
- TERRACE RESTORATION WITH TOPSOIL, SEED & MATTING

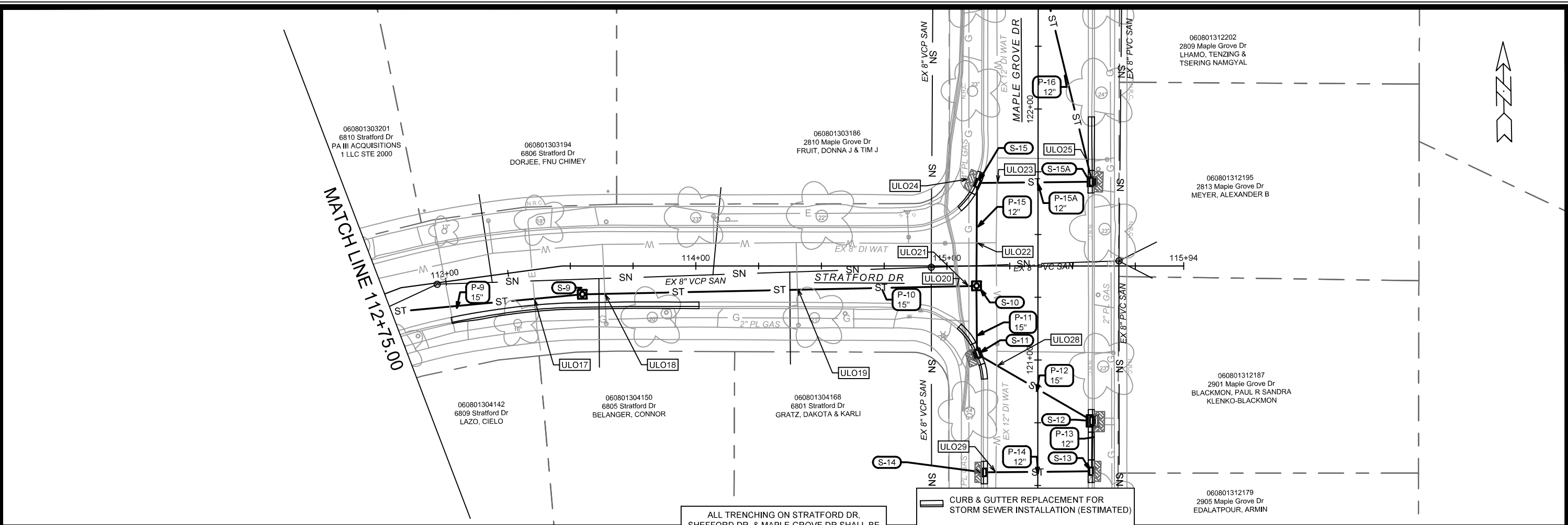


MARK	REVISION	DATE	BY
###	###	###	###
###	###	###	###
###	###	###	###
###	###	###	###

14896
MADISON, WI
CONTRACT NO: 8736

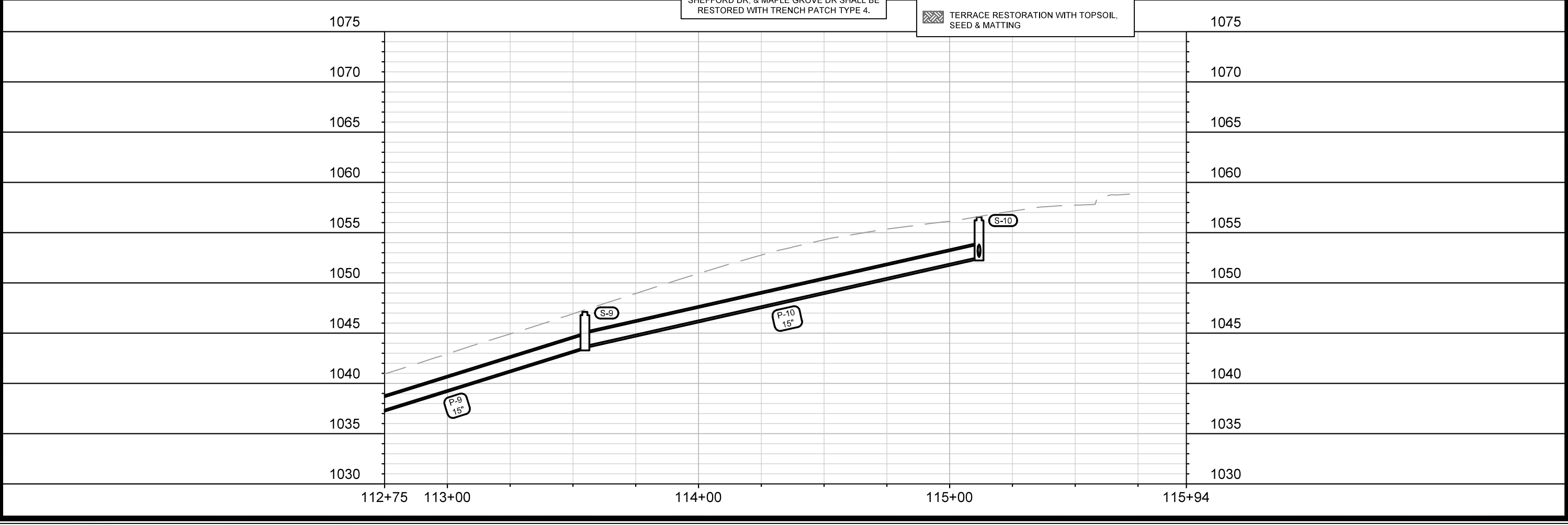
STORM SEWER PLAN & PROFILE - STRATFORD DR
2024 RESURFACING
M:\DESIGN\Projects\14896\CAD\Sewers\14896SWR-PipeNetwork.dwg

14896
U-2



ALL TRENCHING ON STRATFORD DR, SHEFFORD DR, & MAPLE GROVE DR SHALL BE RESTORED WITH TRENCH PATCH TYPE 4.

CURB & GUTTER REPLACEMENT FOR STORM SEWER INSTALLATION (ESTIMATED)
 TERRACE RESTORATION WITH TOPSOIL, SEED & MATTING



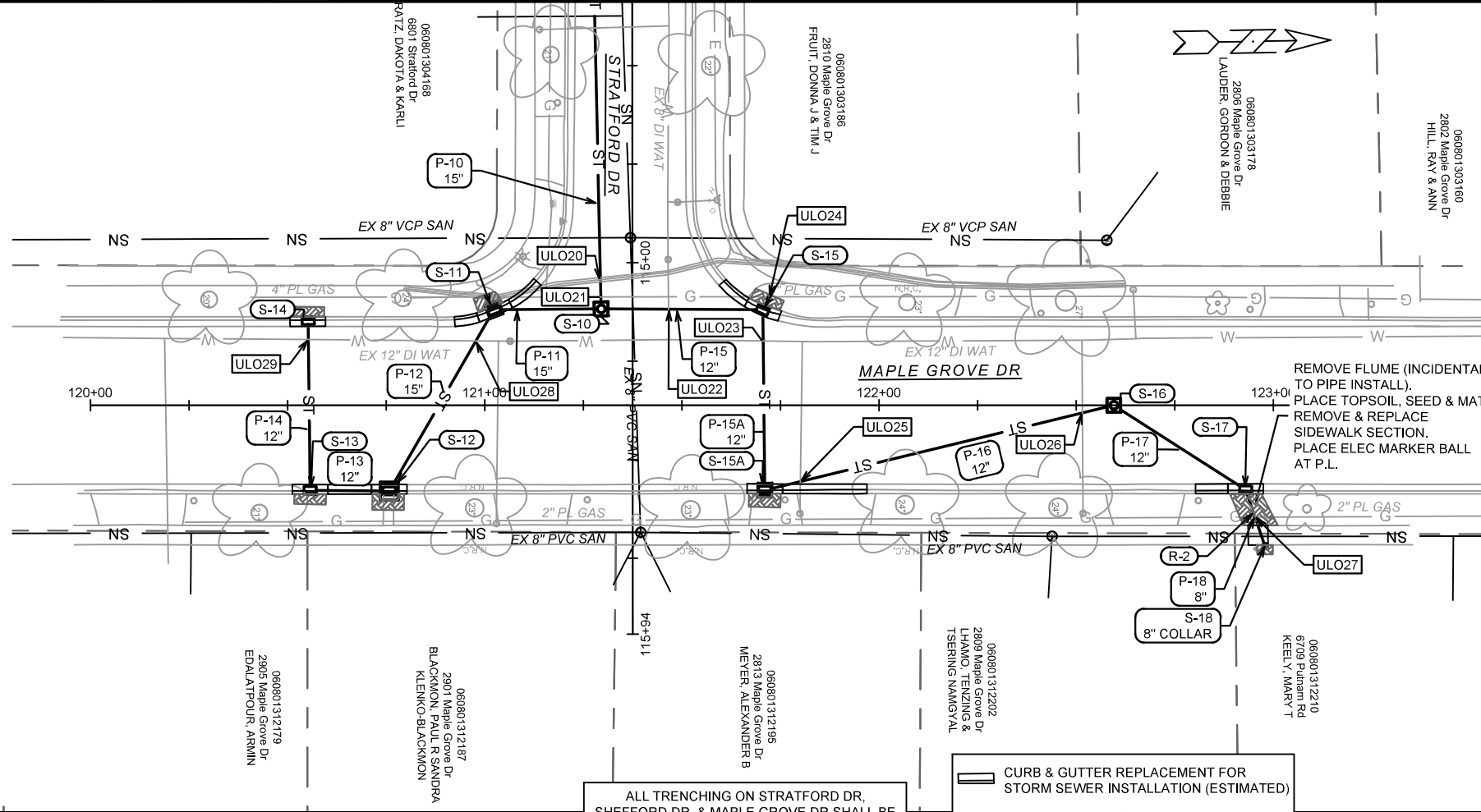
MARK	REVISION	DATE	BY
###	###	###	###
###	###	###	###
###	###	###	###
###	###	###	###

Designed By: DAO
 Date: 2/19/2024 2:45 PM
 Scale: 1" = 40'
 14896

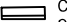

14896
 MADISON, WI
 CONTRACT NO.: 8736

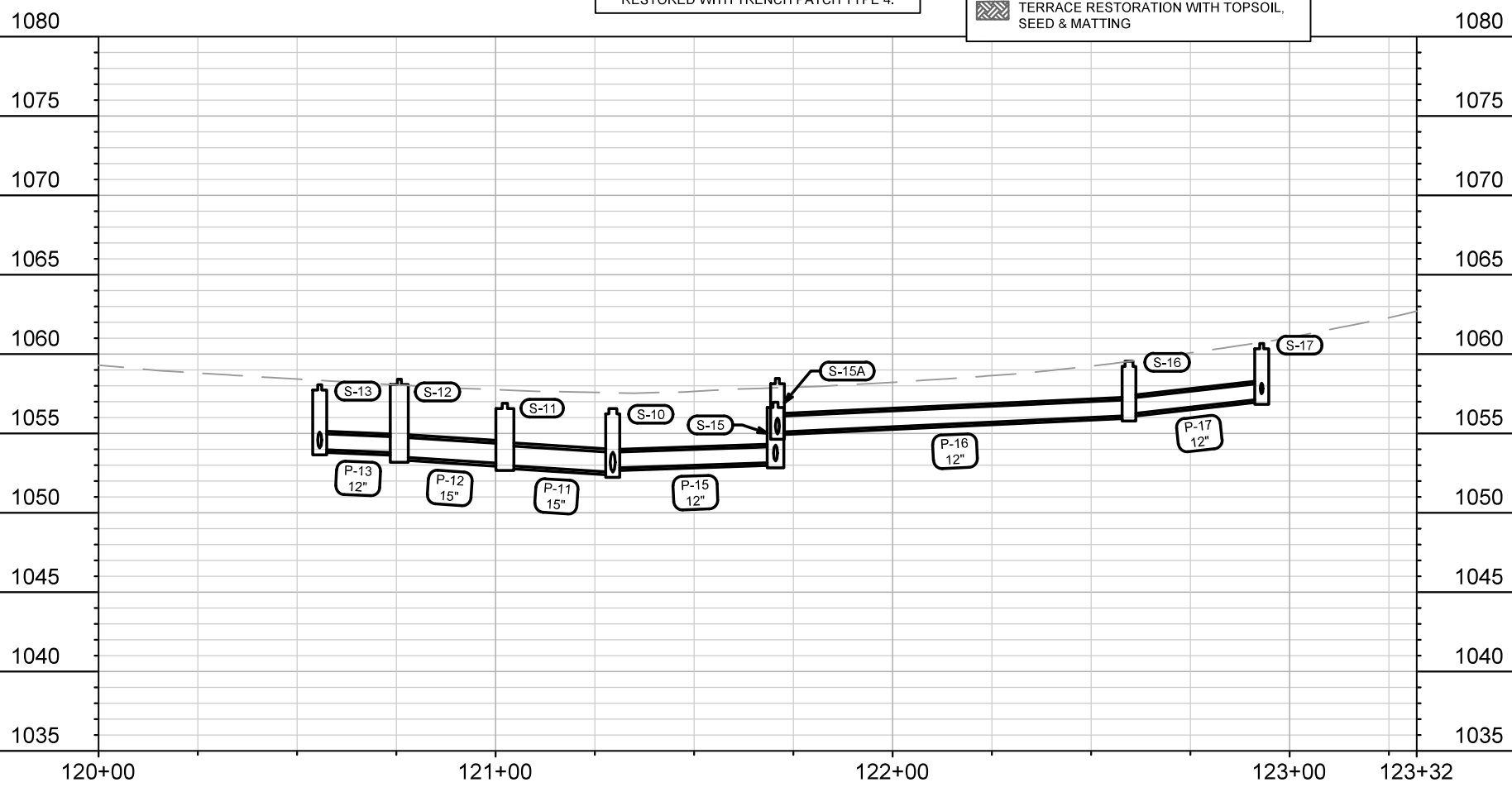
STORM SEWER PLAN & PROFILE - STRATFORD DR
 2024 RESURFACING
 M:\DESIGN\Projects\14896\CAD\Sewers\14896SWR-PipeNetwork.dwg

14896
 U-3



ALL TRENCHING ON STRATFORD DR, SHEFFORD DR, & MAPLE GROVE DR SHALL BE RESTORED WITH TRENCH PATCH TYPE 4.

-  CURB & GUTTER REPLACEMENT FOR STORM SEWER INSTALLATION (ESTIMATED)
-  TERRACE RESTORATION WITH TOPSOIL, SEED & MATTING



MARK	REVISION	DATE	BY
###	###	###	###
###	###	###	###
###	###	###	###
###	###	###	###

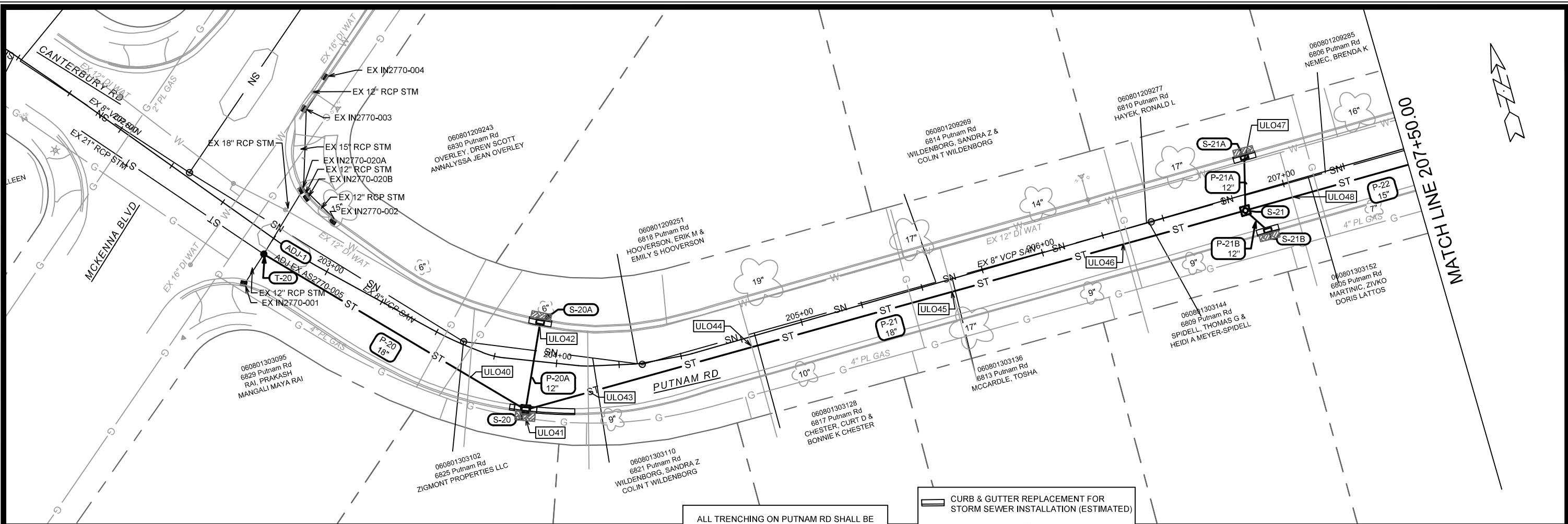
14896
MADISON, WI
8736
CONTRACT NO:

STORM SEWER PLAN & PROFILE - MAPLE GROVE DR
2024 RESURFACING
M:\DESIGN\Projects\14896\CAD\Sewers\14896SWR-PipeNetwork.dwg



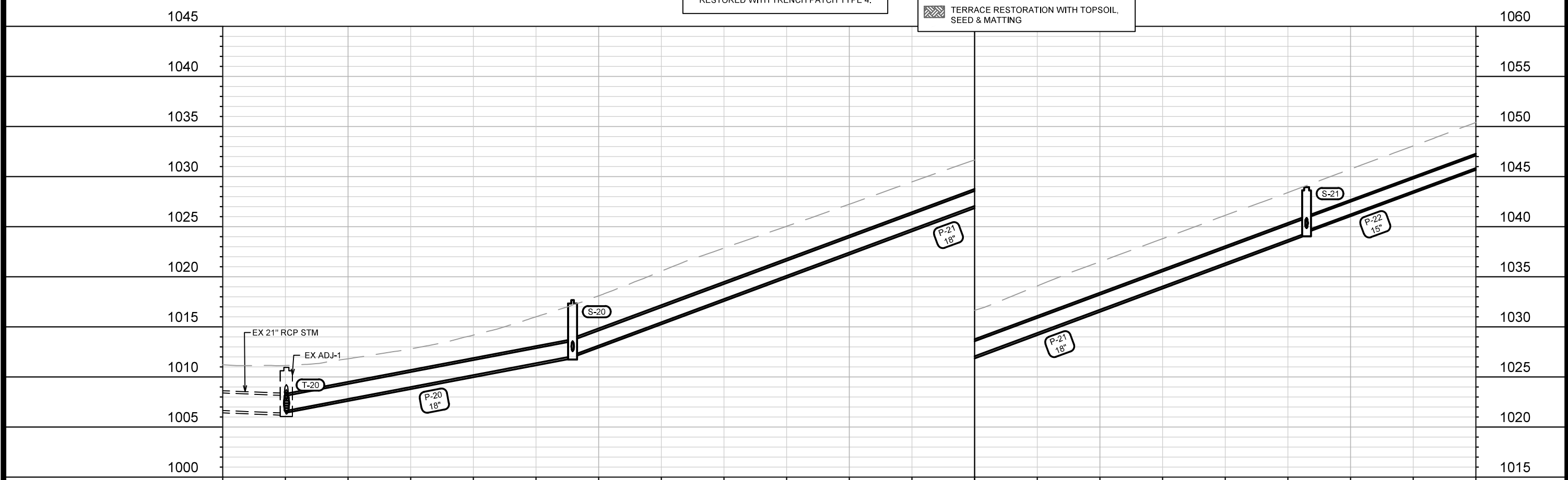
14896
U-4

Designed By: DAO
Date: 2/19/2024 2:46 PM
Scale: 1" = 40'
U-4



ALL TRENCHING ON PUTNAM RD SHALL BE RESTORED WITH TRENCH PATCH TYPE 4.

CURB & GUTTER REPLACEMENT FOR STORM SEWER INSTALLATION (ESTIMATED)
 TERRACE RESTORATION WITH TOPSOIL, SEED & MATTING



MARK	REVISION	DATE	BY
###	###	###	###
###	###	###	###
###	###	###	###
###	###	###	###

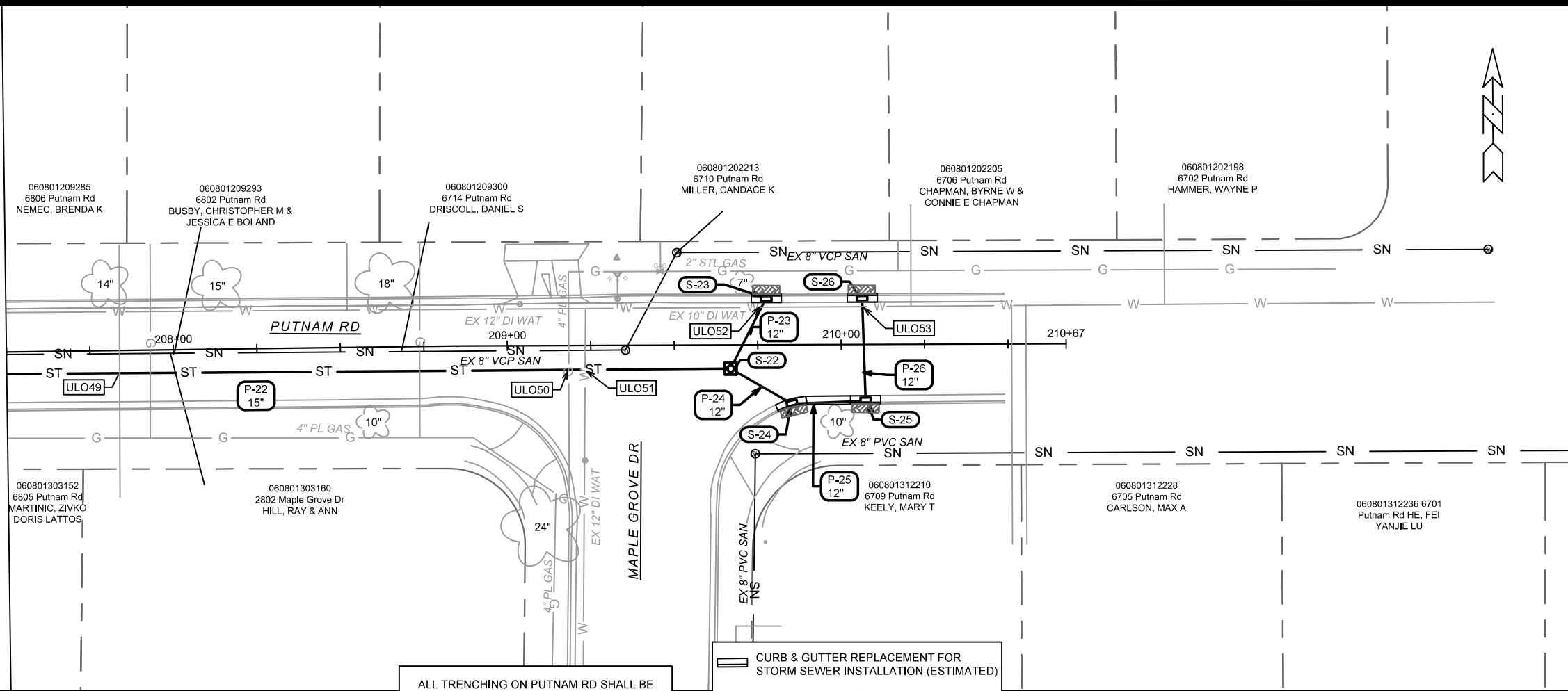
14896
 MADISON, WI
 8736
 CONTRACT NO:

STORM SEWER PLAN & PROFILE - PUTNAM RD
 2024 RESURFACING
 M:\DESIGN\Projects\14896\CAD\Sewers\14896SWR-PipeNetwork.dwg



14896
 U-5

MATCH LINE 207+50.00



ALL TRENCHING ON PUTNAM RD SHALL BE RESTORED WITH TRENCH PATCH TYPE 4.

- CURB & GUTTER REPLACEMENT FOR STORM SEWER INSTALLATION (ESTIMATED)
- TERRACE RESTORATION WITH TOPSOIL, SEED & MATTING

1080

1075

1070

1065

1060

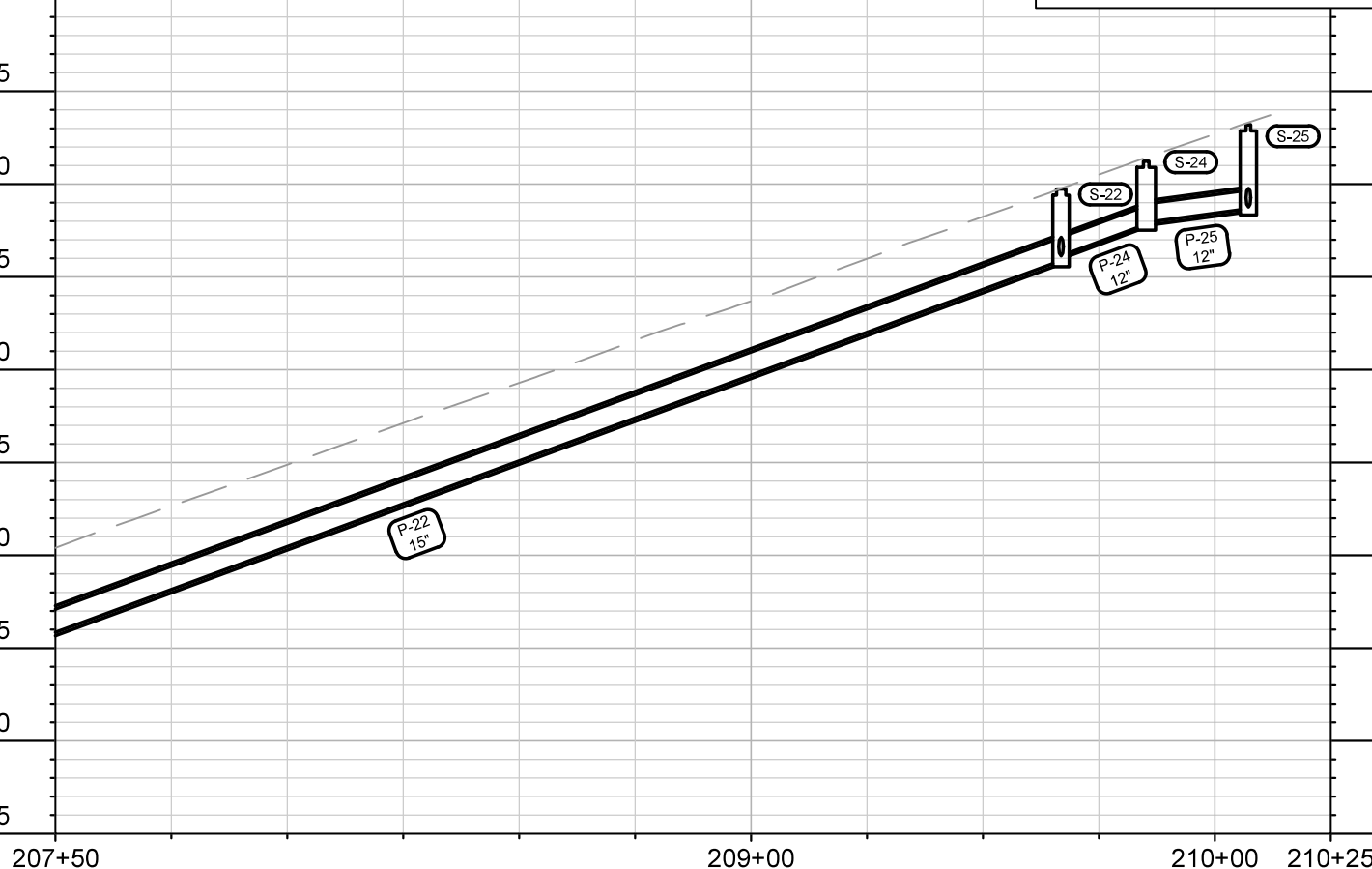
1055

1050

1045

1040

1035



207+50

209+00

210+00

210+25

MARK	REVISION	DATE	BY
###	###	###	###
###	###	###	###
###	###	###	###
###	###	###	###

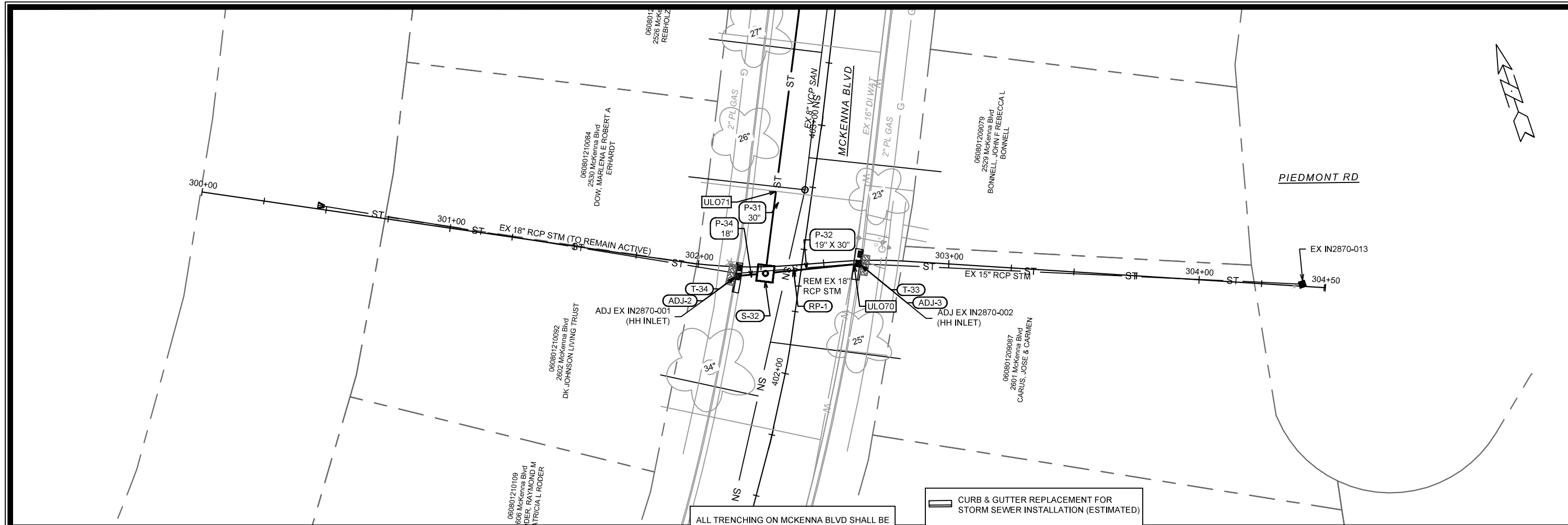
Designed By: DAO
Date: 2/19/2024 2:46 PM
Scale: 1" = 40'

14896
MADISON, WI
8736
CONTRACT NO:

STORM SEWER PLAN & PROFILE - PUTNAM RD
2024 RESURFACING
M:\DESIGN\Projects\14896\CAD\Sewers\14896SWR-PipeNetwork.dwg

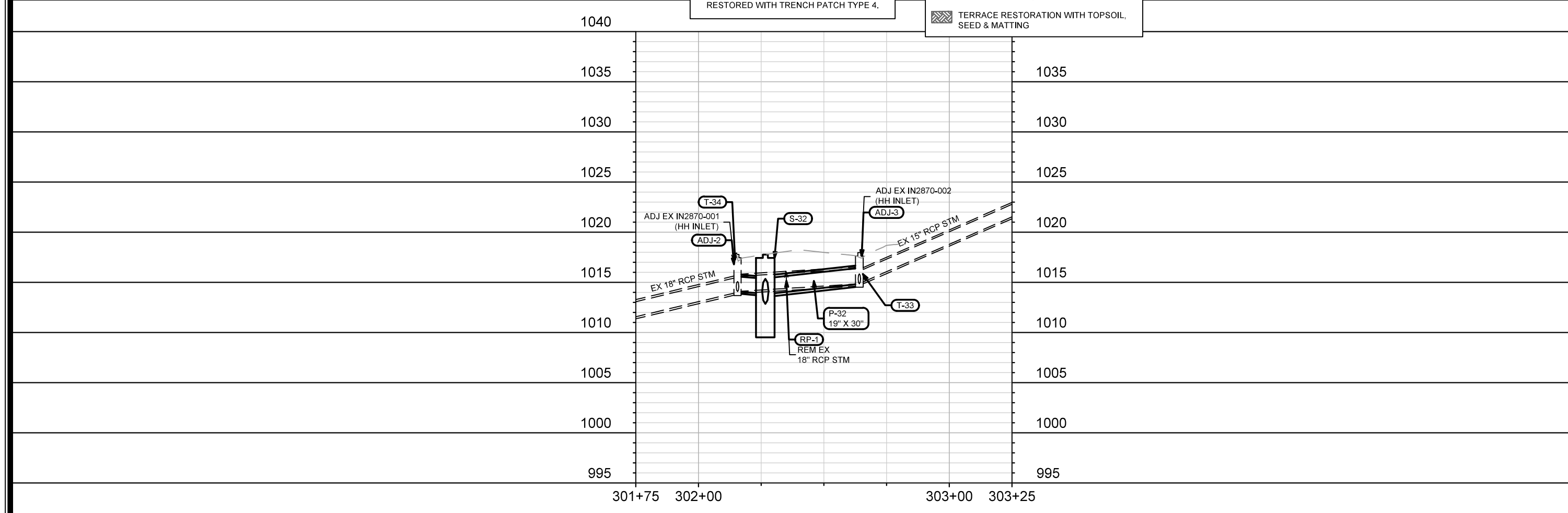


14896
U-6



ALL TRENCHING ON MCKENNA BLVD SHALL BE RESTORED WITH TRENCH PATCH TYPE 4.

	CURB & GUTTER REPLACEMENT FOR STORM SEWER INSTALLATION (ESTIMATED)
	TERRACE RESTORATION WITH TOPSOIL, SEED & MATTING



MARK	REVISION	DATE	BY
###	###	###	###
###	###	###	###
###	###	###	###
###	###	###	###

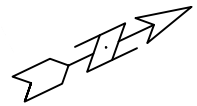
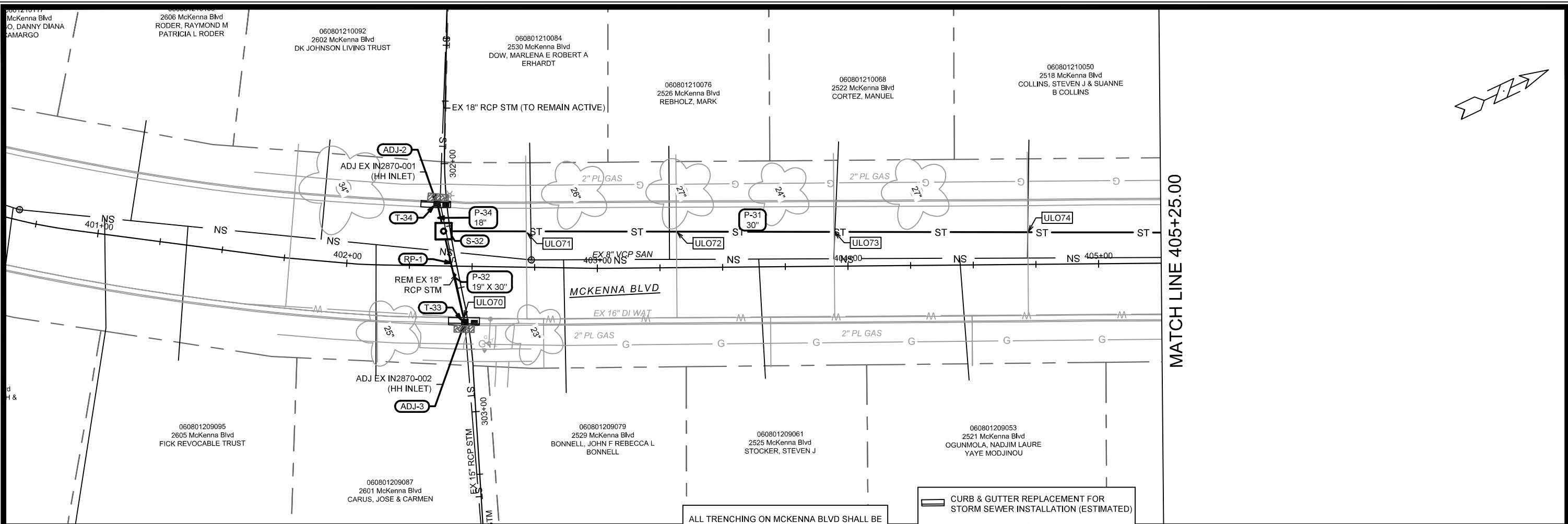
14896
 MADISON, WI
 8736
 CONTRACT NO:

STORM SEWER PLAN & PROFILE - MCKENNA BLVD
 2024 RESURFACING
 M:\DESIGN\Projects\14896\CAD\Sewers\14896SWR-PipeNetwork.dwg



14896
 U-7

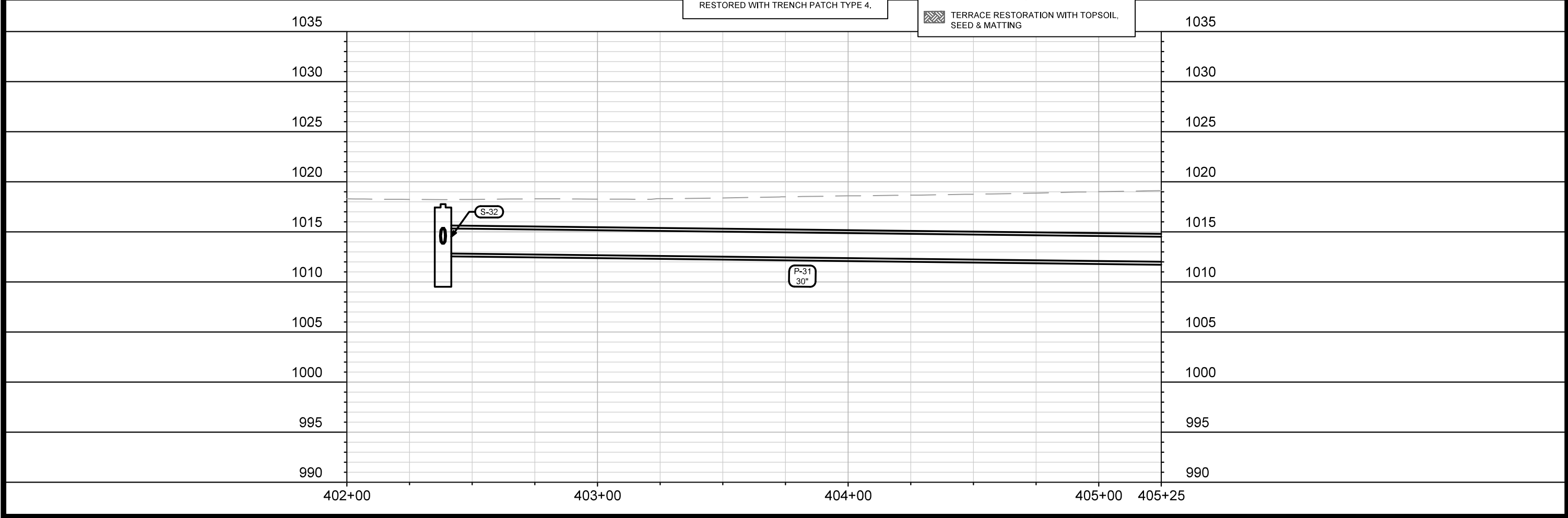
Designed By: DAO
 Date: 2/19/2024 2:46 PM
 Scale: 1" = 40'
 U-7



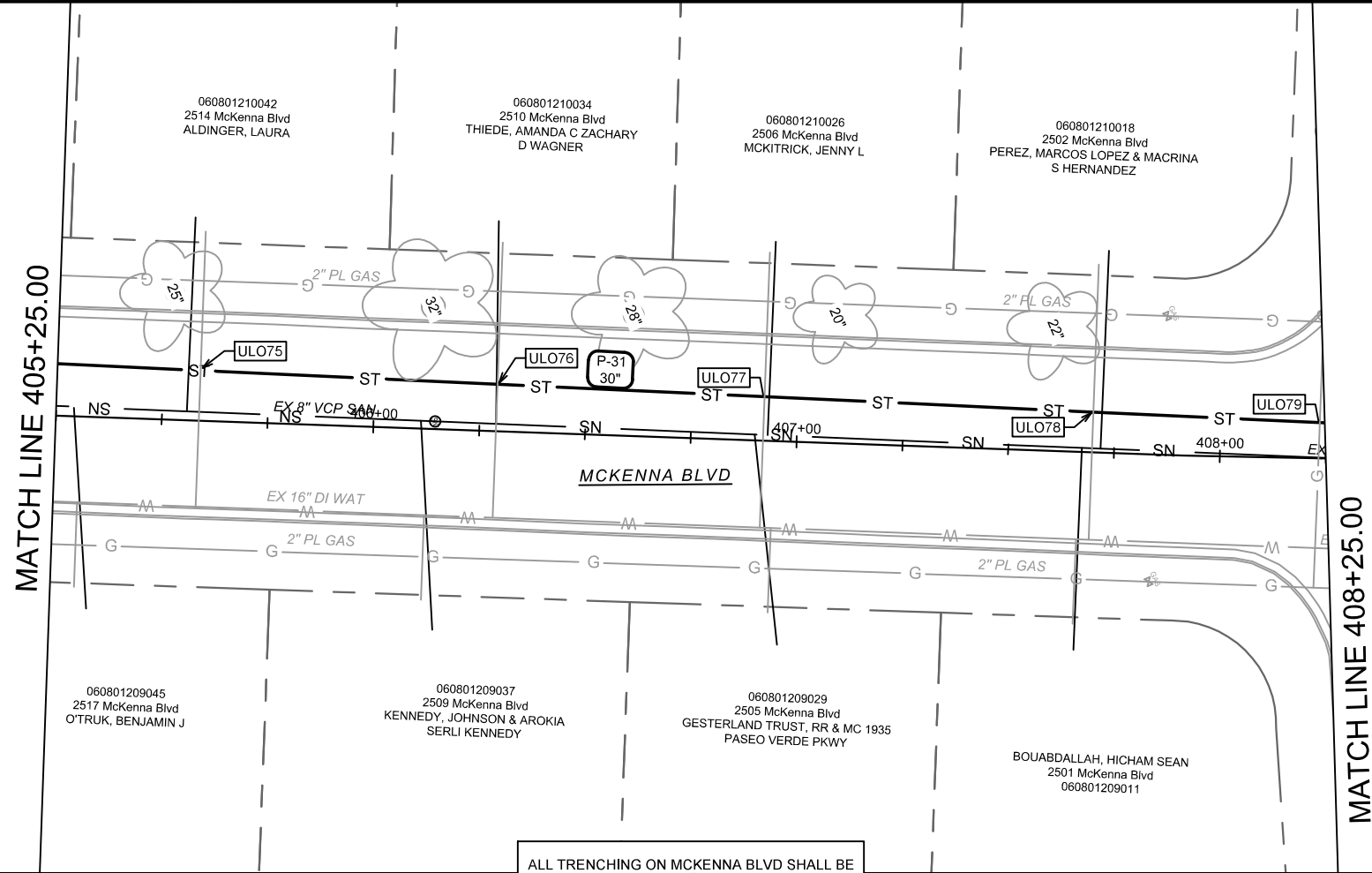
MATCH LINE 405+25.00

ALL TRENCHING ON MCKENNA BLVD SHALL BE RESTORED WITH TRENCH PATCH TYPE 4.

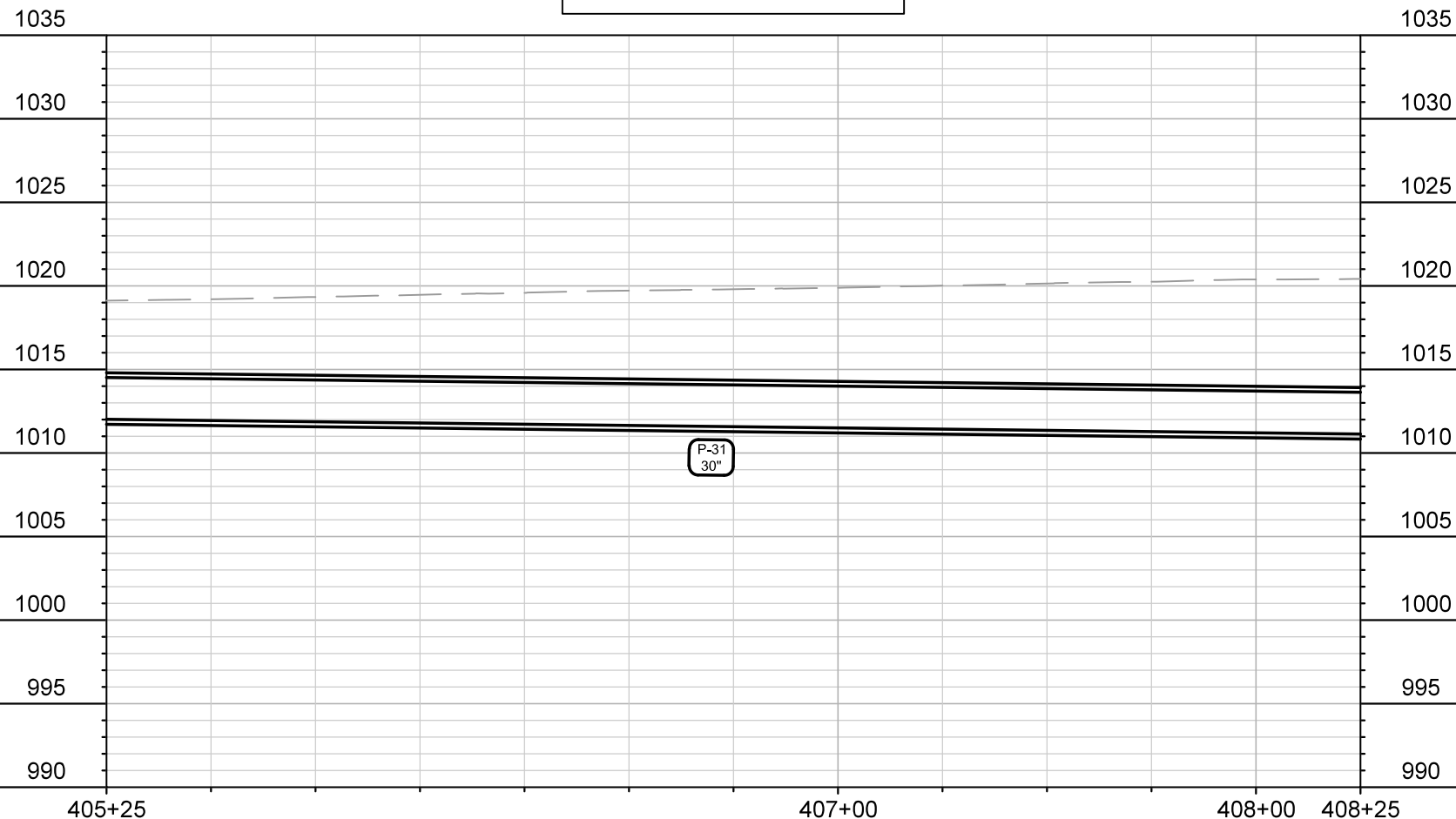
- CURB & GUTTER REPLACEMENT FOR STORM SEWER INSTALLATION (ESTIMATED)
- TERRACE RESTORATION WITH TOPSOIL, SEED & MATTING



14896	MADISON, WI	8736	U-8	
STORM SEWER PLAN & PROFILE - MCKENNA BLVD				U-8
2024 RESURFACING				U-8
M:\DESIGN\Projects\14896\CAD\Sewers\14896SWR-PipeNetwork.dwg				
14896				U-8



ALL TRENCHING ON MCKENNA BLVD SHALL BE RESTORED WITH TRENCH PATCH TYPE 4.



###	###	###	###
###	###	###	###
###	###	###	###
###	###	###	###
###	###	###	###
###	###	###	###
###	###	###	###

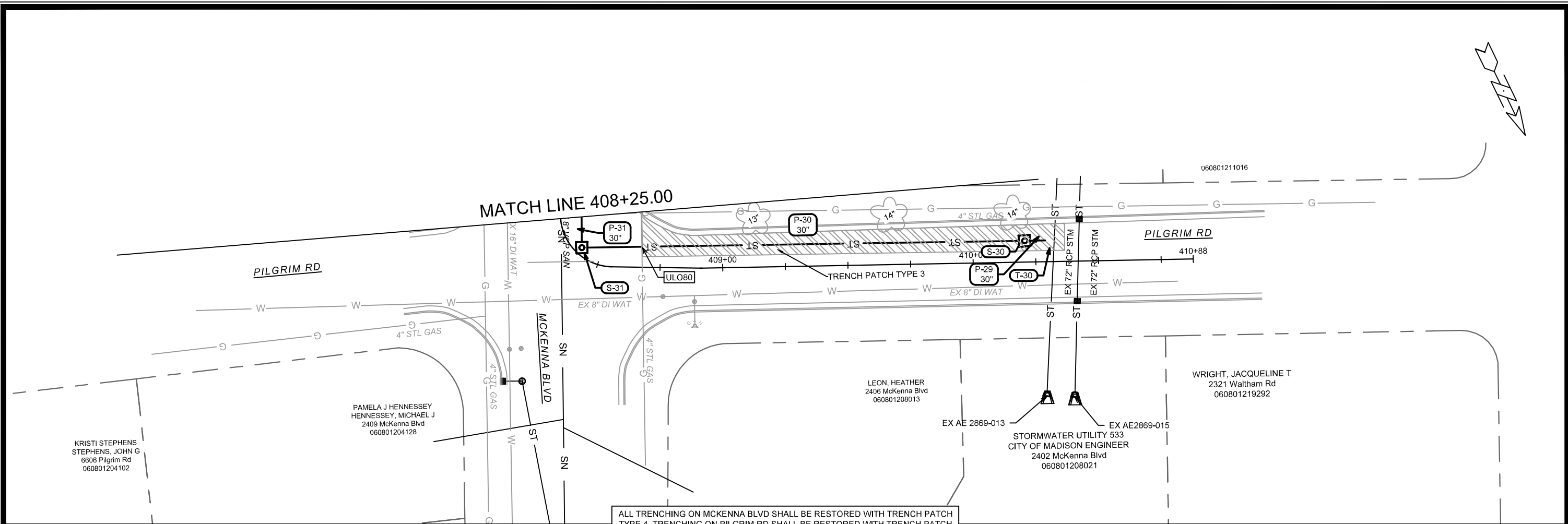
14896
MADISON, WI
CONTRACT NO: 8736

STORM SEWER PLAN & PROFILE - MCKENNA BLVD
2024 RESURFACING
M:\DESIGN\Projects\14896\CAD\sewers\14896SWR-PipeNetwork.dwg

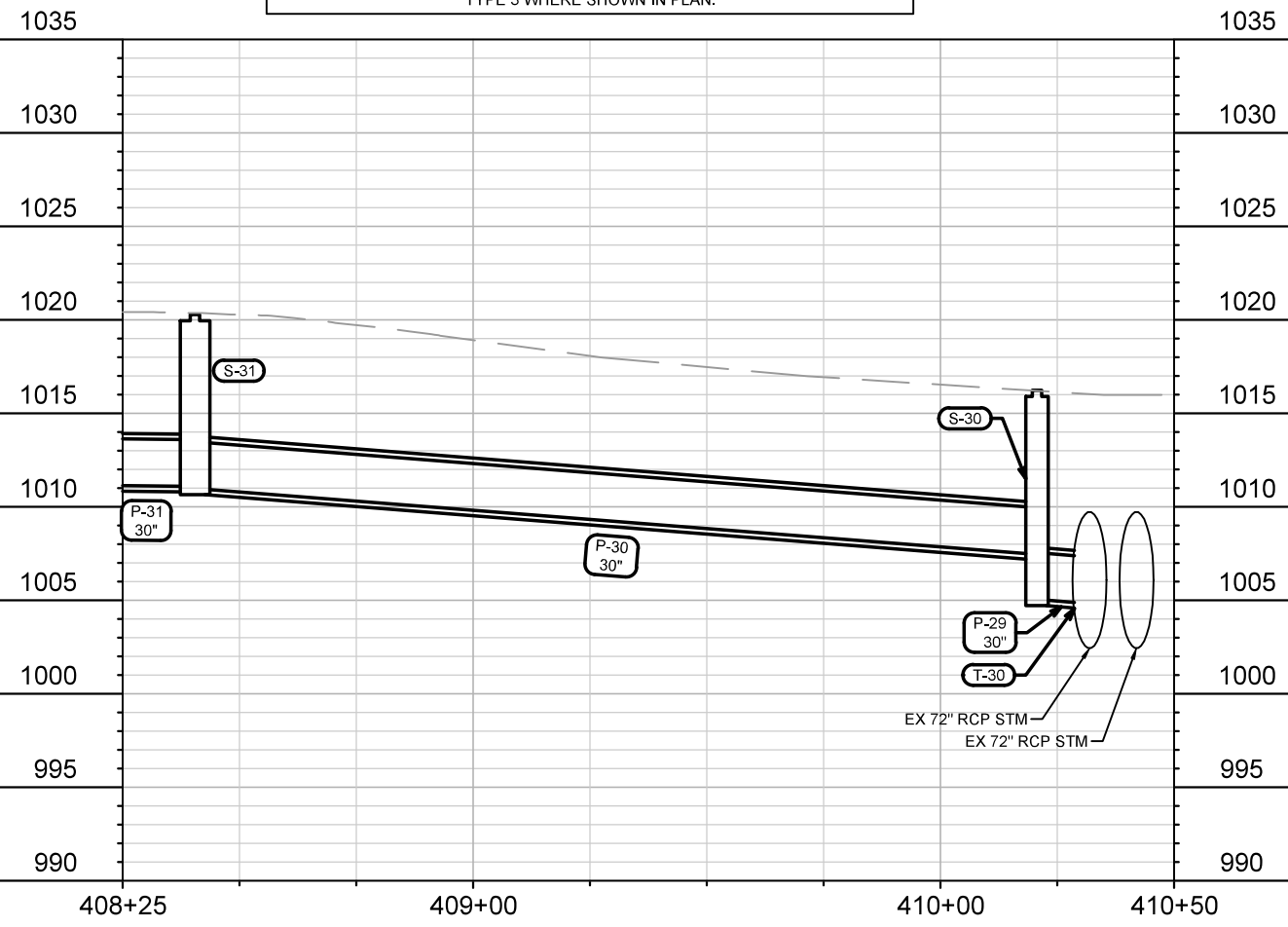


14896
U-9

U-9
Scale: 1" = 40'
Date: 2/19/2024 2:46 PM
Designed By: DAO
14896



ALL TRENCHING ON MCKENNA BLVD SHALL BE RESTORED WITH TRENCH PATCH TYPE 4. TRENCHING ON PILGRIM RD SHALL BE RESTORED WITH TRENCH PATCH TYPE 3 WHERE SHOWN IN PLAN.



MARK	REVISION	DATE	BY
###	###	###	###
###	###	###	###
###	###	###	###
###	###	###	###

Designed By: DAO Date: 2/19/2024 2:46 PM Scale: 1" = 40'

14896

14896

MADISON, WI

8736

CONTRACT NO:

STORM SEWER PLAN & PROFILE - MCKENNA BLVD

2024 RESURFACING

M:\DESIGN\Projects\14896\CAD\Sewers\14896SWR-PipeNetwork.dwg



14896

U-10

STORM SEWER SCHEDULE

2024 RESURFACING PROJECT NO. 14896	SHEET NO. U-11
STORM SEWER SCHEDULE	
CITY OF MADISON	

U-11

PROPOSED STORM STRUCTURES

STRUC. NO.	STATION	LOCATION (OFFSET)	TYPE	TOP OF CASTING	E.I.	DEPTH	NOTES
STRATFORD DR							
S-0	103+07.75	LT-8.21	3X6 STORM SAS	1004.62	999.65	4.97	FP; W/R-3067-7004-V; [1]
S-1	103+89.49	LT-8.20	4X4 STORM SAS	1004.74	1000.26	4.48	W/R-1550-0054
S-1A	104+01.26	LT-14.34	H INLET	1005.11	1001.86	3.25	W/R-3067-7004-V
S-1B	104+01.21	RT-16.74	H INLET	1004.59	1001.78	2.81	FP; W/R-3067-7004-V
S-2	106+99.84	LT-7.04	4X4 STORM SAS	1010.58	1005.08	5.50	W/R-1550-0054
S-3	108+24.03	RT-3.99	3X3 STORM SAS	1013.89	1009.83	4.06	FP; W/R-1550-0054
S-3A	108+37.54	LT-35.08	H INLET	1014.77	1011.27	3.50	FP; W/R-3067-7004-V
S-3B	108+73.54	LT-38.18	H INLET	1015.64	1012.39	3.25	W/R-3067-7004-V
S-3C	108+34.03	RT-42.47	H INLET	1014.63	1011.13	3.50	FP; W/R-3067-7004-V
S-3D	108+66.30	RT-41.43	H INLET	1015.43	1012.18	3.25	W/R-3067-7004-V
S-4	109+25.36	RT-16.98	4X4 STORM SAS	1016.43	1011.93	4.50	W/R-3067-7004-V
S-4A	109+24.43	LT-14.28	H INLET	1016.52	1013.05	3.47	W/R-3067-7004-V
S-6	110+49.17	LT-1.60	4X4 STORM SAS	1022.98	1019.23	3.75	W/R-1550-0054
S-8	112+47.32	CL	3X3 STORM SAS	1038.87	1035.12	3.75	W/R-1550-0054
S-9	113+54.74	RT-11.29	3X3 STORM SAS	1047.11	1043.61	3.50	W/R-1550-0054
S-10	115+11.72	RT-7.93	3X3 STORM SAS	1056.56	1052.56	4.00	W/R-1550-0054

MAPLE GROVE DR

S-11	121+02.37	LT-24.28	3X3 STORM SAS	1056.89	1052.99	3.90	W/R-3067-7004-V
S-12	120+75.78	RT-21.76	4X4 STORM SAS	1058.42	1053.52	4.90	W/R-3067-7004-VB
S-13	120+55.71	RT-21.60	H INLET	1058.06	1053.98	4.08	W/R-3067-7004-V
S-14	120+55.23	LT-21.52	H INLET	1057.80	1054.30	3.50	W/R-3067-7004-V
S-15	121+70.54	LT-24.29	H INLET	1056.96	1053.16	3.80	W/R-3067-7004-V
S-15A	121+71.03	RT-21.53	3X3 STORM SAS	1058.47	1054.97	3.50	W/R-3067-7004-V
S-16	122+59.56	CL	3X3 STORM SAS	1059.54	1056.12	3.42	W/R-1550-0054
S-17	122+92.99	RT-21.44	H INLET	1060.66	1057.16	3.50	W/R-3067-7004-V
S-18	122+97.88	RT-35.66	8" PIPE COLLAR	-	1057.61	-	-

STORM STRUCTURE REMOVALS & ABANDONMENTS

STRUC. NO.	ID NO.	STATION	LOCATION (OFFSET)	TYPE	DEPTH (FT)	NOTES
STRATFORD DR						
R-1	IN2771-006	103+07.67	LT-9.35	INLET	4.99	-
MAPLE GROVE DR						
R-2	UNK	122+95.03	RT-27.23	FLUME & PLATE		REM INCIDENTAL TO PIPE INSTALL

ULO SCHEDULE

ID NO.	STATION	LOCATION (OFF TYPE)	NOTES
STRATFORD DR			
ULO1	103+34.18	LT-8.51	16" WATER MAIN
ULO2	103+98.52	RT-11.03	8" WATER MAIN
ULO3	104+69.06	LT-8.46	WAT LAT
ULO4	105+42.00	LT-8.47	WAT LAT
ULO5	106+15.99	LT-8.94	WAT LAT

SPECIFIC NOTES:

[1] RECONNECT EX 24" RCP STM, EI = 999.65

[2] PLACE ELECTRONIC MARKER BALL AT PROPERTY LINE

STANDARD NOTES:

-PLAN LENGTH (PAY LENGTH) IS FROM CENTER OF STRUCTURE TO CENTER OF STRUCTURE. PIPE LENGTH IS ACTUAL LENGTH OF PIPE FROM STRUCTURE WALL TO STRUCTURE WALL. SLOPE CALCULATED USING PIPE LENGTH.

-ALL FIELD POURED SAS STORM STRUCTURES SHALL BE CONSTRUCTED IN ACCORDANCE WITH STANDARD DETAIL DRAWING 5.7.3. ALL PRECAST SAS STORM STRUCTURES SHALL BE CONSTRUCTED IN ACCORDANCE WITH STANDARD DETAIL DRAWING 5.7.5.

-ALL REBAR FOR FIELD POURED STRUCTURES SHALL BE EPOXY COATED. ANY EXPOSED STEEL SHALL BE TOUCHED UP OR RECOATED

PROPOSED STORM PIPES

PIPE NO.	FROM (DNSTM)	TO (UPSTM)	DISCH. E.I.	INLET E.I.	PLAN (PAY) LGTH (FT)	PIPE LGTH (FT)	SLOPE (%)	PIPE SIZE	TYPE	NOTES
STRATFORD DR										
P-1	S-0	S-1	999.65	1000.26	82	78	0.78%	24"	RCP	-
P-1A	S-1	S-1A	1001.26	1001.86	13	9	6.44%	12"	RCP	-
P-1B	S-1	S-1B	1001.26	1001.78	28	24	2.15%	12"	RCP	-
P-2	S-1	S-2	1000.36	1005.08	310	306	1.54%	24"	RCP	-
P-3	S-2	S-3	1005.33	1009.83	123	120	3.75%	21"	RCP	-
P-3A	S-3	S-3A	1010.33	1011.27	41	38	2.45%	15"	RCP	-
P-3B	S-3A	S-3B	1011.52	1012.39	36	34	2.55%	12"	RCP	-
P-3C	S-3	S-3C	1010.33	1011.13	40	37	2.19%	15"	RCP	-
P-3D	S-3C	S-3D	1011.38	1012.18	32	30	2.64%	12"	RCP	-
P-4	S-3	S-4	1009.93	1011.93	102	99	2.02%	18"	RCP	-
P-4A	S-4	S-4A	1012.43	1013.05	31	28	2.19%	12"	RCP	-
P-5	S-4	S-6	1012.18	1019.23	125	121	5.81%	15"	RCP	-
P-7	S-6	S-8	1019.33	1035.12	198	195	8.09%	15"	RCP	-
P-9	S-8	S-9	1035.22	1043.61	105	102	8.19%	15"	RCP	-
P-10	S-9	S-10	1043.71	1052.56	157	154	5.73%	15"	RCP	-
P-11	S-10	S-11	1052.56	1052.99	27	24	1.79%	15"	RCP	-
P-15	S-10	S-15	1052.81	1053.16	41	38	0.92%	12"	RCP	-

MAPLE GROVE DR

P-12	S-11	S-12	1053.09	1053.52	53	49	0.88%	15"	RCP	-
P-13	S-12	S-13	1053.77	1053.98	20	17	1.27%	12"	RCP	-
P-14	S-13	S-14	1054.08	1054.30	43	41	0.54%	12"	RCP	-
P-15A	S-15	S-15A	1053.26	1054.97	46	43	3.95%	12"	RCP	-
P-16	S-15A	S-16	1055.07	1056.12	91	88	1.19%	12"	RCP	-
P-17	S-16	S-17	1056.22	1057.16	40	36	2.60%	12"	RCP	-
P-18	S-17	S-18	1057.49	1057.61	15	14	0.86%	8"	PVC	[2]

ULO SCHEDULE

ID NO.	STATION	LOCATION (OFF TYPE)	NOTES
STRATFORD DR			
ULO6	108+20.70	RT-3.33	2" GAS
ULO7	108+29.27	RT-24.14	2" GAS
ULO8	108+30.62	RT-29.35	2" GAS
ULO9	108+68.00	LT-37.70	6" WAT MAIN
ULO10	108+64.33	RT-8.99	6" WAT MAIN
ULO11	108+26.11	RT-11.96	8" WAT MAIN
ULO12	108+60.70	RT-41.61	6" WAT MAIN
ULO13	109+24.60	LT-8.61	8" WAT MAIN
ULO14	110+42.85	LT-1.10	WAT LAT
ULO15	111+16.76	LT-0.21	WAT LAT
ULO16	111+86.13	RT-1.31	WAT LAT
ULO17	113+34.02	RT-11.47	UG ELEC
ULO18	113+63.71	RT-10.99	WAT LAT
ULO19	114+40.42	RT-8.89	WAT LAT
ULO20	115+04.36	RT-8.17	UG ELEC DUCT
ULO21	115+08.71	RT-8.03	4" GAS

ULO SCHEDULE

ID NO.	STATION	LOCATION (TYPE)	NOTES
MAPLE GROVE DR			
ULO22	121+46.67	LT-24.40	8" WAT MAIN
ULO23	121+70.62	LT-16.26	12" WAT MAIN
ULO24	121+72.14	LT-27.54	4" GAS
ULO25	121+80.03	RT-19.34	WAT LAT
ULO26	122.51.57	RT-1.90	WAT LAT
ULO27	122+95.36	RT-28.37	4" GAS
ULO28	120+97.66	LT-16.32	12" WAT MAIN
ULO29	120+55.30	LT-16.67	12" WAT MAIN

- ABBREVIATIONS: AE = APRON ENDWALL; RCP = REINFORCED CONCRETE PIPE; HERCP = HORIZONTAL ELLIPTICAL REINFORCED CONCRETE PIPE; DNA = DOES NOT APPLY; SAS = SEWER ACCESS STRUCTURE; LP = LOW POINT INLET STRUCTURE; FP = FIELD POURED STRUCTURE; TR = TOP OF CONCRETE ROOF; NCM = NO CROWN MATCH FOR PIPES; UD = UNDERDRAIN

- APPROXIMATE DISCHARGE E.I. GIVEN, ADJUST E.I. AND PIPE SLOPE IN THE FIELD.

- TOP OF CASTING GRADE GIVEN IS THE TOP OF CURB FOR INLET STRUCTURES AND THE FLOWLINE OF THE CLOSED CASTING FOR SAS'S.

- ALL REINFORCED CONCRETE PIPES TO BE CLASS 3 UNLESS OTHERWISE NOTED.

- SURVEYOR TO CONFIRM THAT ALL INLET STATION / OFFSETS LINE UP WITH PROPOSED CURB AND GUTTER.

- ALL STRUCTURES CALLED OUT AS FIELD POURED SHALL BE FIELD POURED. ALL OTHER STRUCTURES (NOT INDICATED AS FIELD POURED) SHALL BE SUBMITTED TO CITY ENGINEERING FOR APPROVAL IF PRECAST STRUCTURES ARE PREFERRED. CONTACT DANIEL OLIVARES OF CITY ENGINEERING AT (608) 261-9285 FOR PRECAST APPROVALS, FAX SHOP DRAWINGS TO (608)264-9275, OR EMAIL SHOP DRAWINGS TO DAOLIVARES@CITYOFMADISON.COM.

STORM SEWER SCHEDULE

2024 RESURFACING PROJECT NO. 14896	SHEET NO. U-12	U-12
STORM SEWER SCHEDULE		
CITY OF MADISON		

PROPOSED STORM STRUCTURES

STRUC. NO.	STATION	LOCATION (OFFSET)	TYPE	TOP OF CASTING	E.I.	DEPTH	NOTES
PUTNAM RD							
T-20	202+75.45	RT-7.42	18" STORM TAP	-	1006.64	-	TAP AT ADJ-1
S-20	203+89.61	RT-19.73	3X3 STORM SAS	1017.67	1012.07	5.60	W/R-3067-7004-V
S-20A	203+91.78	LT-15.98	H INLET	1017.06	1013.56	3.50	W/R-3067-7004-V
S-21	206+82.44	RT-6.22	3X3 STORM SAS	1043.94	1039.36	4.58	W/R-1550-0054
S-21A	206+88.01	LT-14.58	H INLET	1044.59	1041.08	3.51	W/R-3067-7004-V
S-21B	206+88.90	RT-16.52	H INLET	1044.68	1041.18	3.50	W/R-3067-7004-V
S-22	209+66.86	RT-7.08	3X3 STORM SAS	1069.73	1065.88	3.85	W/R-1550-0054
S-23	209+77.65	LT-14.18	H INLET	1070.75	1067.25	3.50	W/R-3067-7004-V
S-24	209+85.23	RT-17.68	H INLET	1071.24	1067.84	3.40	W/R-3067-7004-V
S-25	210+07.27	RT-16.88	H INLET	1073.20	1068.67	4.53	W/R-3067-7004-V
S-26	210+06.35	LT-14.10	H INLET	1073.30	1069.80	3.50	W/R-3067-7004-V

MAPLE GROVE DR

T-30	410+32.08	LT-8.52	30" STORM TAP	-	1004.81	-	TAP AT SPRINGLINE
S-30	410+20.63	LT-8.47	4X4 STORM SAS	1016.23	1005.05	11.18	FP; W/R-1550-0054
S-31	408+40.47	LT-2.73	4X4 STORM SAS	1020.28	1010.98	9.30	W/R-1550-0054
S-32	402+38.39	LT-13.88	6X6 CATCH BASIN W/3' SUM	1017.77	1012.85	4.92	FP; W/TWO-R-1550-0054; [3]
T-33	402+47.44	RT-22.50	19"X30" STORM TAP	-	1014.85	-	TAP AT ADJ-3
T-34	302+15.62	RT-3.71	18" STORM TAP	-	1014.09	-	TAP AT ADJ-2

STORM STRUCTURE ADJUSTMENTS

STRUC. NO.	ID NO.	STATION	LOCATION (OFFSET)	EX TOC	PROP TOC	ADJ (FT)	NOTES
PUTNAM RD							
ADJ-1	AS2770-005	202+75.37	RT-7.43	1010.95	1010.95	0.00	18" STM TAP (T-20)
MCKENNA BLVD & PILGRIM RD							
ADJ-2	IN2870-001	302+15.58	RT-3.80	1017.79	1017.79	0.00	18" STM TAP (T-34); [4]
ADJ-3	IN2870-002	302+64.16	RT-1.29	1017.96	1017.96	0.00	19"X30" STM TAP (T-33); [4]

ULO SCHEDULE

ID NO.	STATION	LOCATION (OFF TYPE)	NOTES
PUTNAM RD			
ULO40	203+68.97	RT-11.44	WAT LAT
ULO41	203+89.86	RT-23.02	4" GAS
ULO42	203+91.65	LT-13.90	12" WAT MAIN
ULO43	204+12.54	RT-10.17	WAT LAT
ULO44	204+78.21	RT-3.72	WAT LAT
ULO45	205+61.22	RT-4.50	WAT LAT
ULO46	206+32.21	RT-5.16	WAT LAT
ULO47	206+87.33	LT-12.23	12" WAT MAIN
ULO48	207+02.00	RT-6.26	WAT LAT
ULO49	207+83.80	RT-7.07	WAT LAT
ULO50	209+18.41	RT-7.26	4" GAS
ULO51	209+23.29	RT-7.31	12" WAT MAIN
ULO52	209+75.92	LT-11.67	10" WAT MAIN
ULO53	210+06.43	LT-11.30	10" WAT MAIN

SPECIFIC NOTES:

- [3] INSTALL 3' SUMP BELOW PIPE INVERT, GIVEN IN CHART
- [4] EX STRUCTURE IS DOUBLE-H INLET

PROPOSED STORM PIPES

PIPE NO.	FROM (DNSTM)	TO (UPSTM)	DISCH. E.I.	INLET E.I.	PLAN (PAY) LGTH (FT)	PIPE LGTH (FT)	SLOPE (%)	PIPE SIZE	TYPE	NOTES
PUTNAM RD										
P-20	T-20	S-20	1006.64	1012.07	121	120	4.53%	18"	RCP	-
P-20A	S-20	S-20A	1012.57	1013.56	36	33	2.97%	12"	RCP	-
P-21	S-20	S-21	1012.17	1039.36	298	296	9.18%	18"	RCP	-
P-21A	S-21	S-21A	1039.86	1041.08	22	19	6.41%	12"	RCP	-
P-21B	S-21	S-21B	1039.86	1041.18	12	9	14.21%	12"	RCP	-
P-22	S-21	S-22	1039.61	1065.88	284	283	9.29%	15"	RCP	-
P-23	S-22	S-23	1066.13	1067.25	24	21	5.32%	12"	RCP	-
P-24	S-22	S-24	1066.13	1067.84	21	18	9.48%	12"	RCP	-
P-25	S-24	S-25	1067.94	1068.67	22	19	3.83%	12"	RCP	-
P-26	S-25	S-26	1068.77	1069.80	31	29	3.54%	12"	RCP	-
MAPLE GROVE DR										
P-29	T-30	S-30	1004.81	1005.05	11	7	3.69%	30"	RCP	-
P-30	S-30	S-31	1007.45	1010.98	177	173	2.04%	30"	RCP	NCM
P-31	S-31	S-32	1011.08	1012.85	598	593	0.30%	30"	RCP	-
P-32	S-32	T-33	1013.81	1014.85	37	33	3.11%	19"X30"	HERCP	-
P-34	S-32	T-34	1013.85	1014.09	11	7	3.33%	18"	RCP	-

STORM PIPE REMOVALS & ABANDONMENTS

PIPE REM NO.	REMOVE FROM	REMOVE TO	LGTH (FT)	PAID (Y/N)	REM LGTH PAID (FT)	ABN LGTH (FT)	SLURRY (CY)	PIPE SIZE	PIPE TYPE	NOTES
MCKENNA BLVD										
RP-1	ADJ-2	ADJ-3	49	N	0.00	0.00	0.00	18"	RCP	

ULO SCHEDULE

ID NO.	STATION	LOCATION (OFF TYPE)	NOTES
MCKENNA BLVD & PILGRIM RD			
ULO70	302+62.05	RT-1.43	16" WAT MAIN
ULO71	302+33.05	LT-29.82	WAT LAT
ULO72	302+45.44	LT-88.57	WAT LAT
ULO73	302+57.29	LT-150.17	WAT LAT
ULO74	302+64.19	LT-226.22	WAT LAT
ULO75	302+69.30	LT-312.24	WAT LAT
ULO76	302+72.49	LT-381.86	WAT LAT
ULO77	302+74.65	LT-444.57	WAT LAT
ULO78	302+76.80	LT-521.89	WAT LAT
ULO79	302+78.04	LT-575.22	4" GAS
ULO80	302+72.59	LT-590.81	4" GAS